



# 2011

ALTIMA  
CORONA  
BREEZY  
ZETA

SPECIFICATIONS



**TIFFIN MOTORHOMES**  
WHEREVER YOU GO, WE GO.

FULL BODY PAINT SCHEMES



Gold Coral



Maroon Coral



Silver Sand



Sunlit Sand



Rocky Mountain Brown

## MECHANICAL SPECIFICATIONS

### Automotive

#### STANDARD EQUIPMENT:

- Allison 1000 MH 6-speed Automatic with Lock-up
- Air Suspension
- Full Air Brakes

POWERGLIDE® REAR ENGINE DIESEL CHASSIS:	28 BR	32 BR
Engine	Navistar MaxxForce 7®	Navistar MaxxForce 7®
Peak HP	215 HP @ 2,600 RPM	215 HP @ 2,600 RPM
Peak Torque (Lb. - Ft. Max Net)	560 @ 1,400	560 @ 1,400
GAWR - Front	8,500 Lb.	8,500 Lb.
GAWR - Rear	13,500 Lb.	13,500 Lb.
GVWR	22,000 Lb.	22,000 Lb.
GCWR	26,000 Lb.	26,000 Lb.
Wheel Base	152"	202"
Tire Size	265/70R19.5	265/70R19.5
Fuel Tank (Gallons)	65	65
Alternator Amps	170	170
Trailer Hitch Capacity	5,000 Lb.	5,000 Lb.

OVERALL:	28 BR	32 BR		28 BR	32 BR
Overall Length (Approximate)	29' 7"	33' 2"	Fresh Water (Gallons)	70	70
Overall Height with Roof Air (Maximum)	11' 2"	11' 2"	Black Water (Gallons)	30	30
Interior Height	78"	78"	Grey Water (Gallons)	50	50
Overall Width	95"	95"	LPG Tank (Gallons; can only be filled to 80% capacity)	20	20
Interior Width	91"	91"	Minimum Garage Height	12'	12'

### Structural

#### STANDARD EQUIPMENT:

- One-piece Moisture Resistant Molded Fiberglass Roof Cap
- Laminated Floor, Sidewall & Roof
- Steel/Aluminum Reinforced Structure

### Exterior

#### STANDARD EQUIPMENT:

- Fiberglass Front & Rear Caps
- Tinted One-piece Windshield
- 6.0 kw Onan® Diesel Generator
- Horizontal Mounted Wipers
- Heated Power Mirrors
- Gel-coat Fiberglass Walls
- Exterior Patio Light
- Power Patio Awning
- Slide-out Awning(s)
- Aluminum Wheels
- 13,500 BTU Low Profile Roof A/C - Front
- Quiet A/C Roof-ducted System
- Electric Step
- 1/4" Thick Single Pane Windows
- Convenient Access Doors with Gas Shocks
- Ridged Long-life Storage Boxes
- Single Handle Lockable Storage Door Latches
- Heated Water & Holding Tank Compartments
- Two 6 V Auxiliary Batteries
- Park Telephone Ready
- Digital / Analog TV Antenna
- Cable Ready TV
- 50 Amp Service
- Black Holding Tank Flush System
- Exterior Rinse Hose / Shower
- Back-up Monitor
- 110 V Exterior Receptacle
- 110 V / 12 V Converter
- Undercoating
- Roof Ladder
- External Tripod Satellite Hook-up
- Exterior Storage Compartment Lights
- Paint Protective Film
- Side-view Cameras Activated by Turn Signals
- Full Body Paint
- Level Air System

AVAILABLE OPTIONS:	28 BR	32 BR
Automatic Satellite	○	○
15,000 BTU Low Profile Roof A/C with Heat Pump (in Place of Front A/C)	○	○
2nd 13,500 BTU Low Profile Roof A/C - Rear	○	S

All options may not be available in all models. Because of progressive improvements, specifications, standard & optional equipment are subject to change without notice or obligation.

## Driver's Compartment

### STANDARD EQUIPMENT:

- Step Switch & 12 V Disconnect Switch
- Non-power Cloth Driver & Passenger Seats (Flexsteel®)
- Lighted Instrument Panel
- Contemporary Wraparound Dash
- Single CD Player & AM/FM Stereo
- Dual 12 V Dash Receptacles
- Dash Gauges with Diagnostic System
- Dual Dash Fans
- Auxiliary Start
- Adjustable Gas & Brake Pedals
- Power Windshield Solar/Privacy Shade
- Manual Driver & Passenger Solar/Privacy Shades
- Fire Extinguisher
- Snack / Beverage Tray

### AVAILABLE OPTIONS:

AVAILABLE OPTIONS:	28 BR	32 BR
Power Cloth Driver & Passenger Seats	<input type="radio"/>	<input type="radio"/>
Power Leather Driver & Passenger Seats	<input type="radio"/>	<input type="radio"/>
Front Overhead TV	<input type="radio"/>	<input type="radio"/>

## Living Area/Dinette

### STANDARD EQUIPMENT:

- U-shaped Dinette Converts to Bed
- Midsection TV
- Inverter for Televisions & Optional Surround Sound
- Cloth DE Sofa Bed on Driver's Side

### AVAILABLE OPTIONS:

AVAILABLE OPTIONS:	28 BR	32 BR
Ultra Leather DE Sofa Bed on Driver's Side	<input type="radio"/>	<input type="radio"/>
DVD Player (NA with Surround Sound Option)	<input type="radio"/>	<input type="radio"/>
Home Theater Surround Sound System (Includes DVD Player)	<input type="radio"/>	<input type="radio"/>

## Kitchen

### STANDARD EQUIPMENT:

- Solid Surface Countertops
- Solid Surface Backsplash & Splash Guard
- Solid Wood Refrigerator Panels
- Stainless Steel Sink with Folding Glass Cover
- 2-burner Cooktop with Folding Glass Cover
- Convection Microwave with Exterior Venting
- 6 Cubic Foot Refrigerator

### AVAILABLE OPTIONS:

AVAILABLE OPTIONS:	28 BR	32 BR
Icemaker in Freezer	<input type="radio"/>	<input type="radio"/>

## Bath

### STANDARD EQUIPMENT:

- Medicine Cabinet
- Skylights in Shower and Water Closet
- Satin Nickel Vanity Faucet
- Molded Fiberglass One-piece Shower
- Solid Surface Vanity Top
- Fantastic® Fan
- Carbon Monoxide & Propane Gas Detector

## Bedroom

### STANDARD EQUIPMENT:

- Dual Wardrobes
- Bed Comforter with Throw Pillows
- Memory Foam Queen Mattress
- Wall-to-wall Carpeting
- Solar / Privacy Shades
- Four Large Drawers in Bed Pedestal

### AVAILABLE OPTIONS:

AVAILABLE OPTIONS:	28 BR	32 BR
Vinyl Tile Flooring in Bedroom	<input type="radio"/>	<input type="radio"/>
Bedroom TV	<input type="radio"/>	<input type="radio"/>

## General Interior

### STANDARD EQUIPMENT:

- Raised Panel Cabinet Doors
- Vinyl Headliner
- Wall-to-wall Vinyl Tile Flooring in Living Room, Kitchen & Bath
- Ball Bearing Drawer Slides
- Solar / Privacy Shades in Living Room
- Scotchgard® Treated Carpet & Fabrics
- Tank Level Monitor System
- Smoke Detector
- 6-gallon DSI Gas / Electric Water Heater
- Step Well Cover

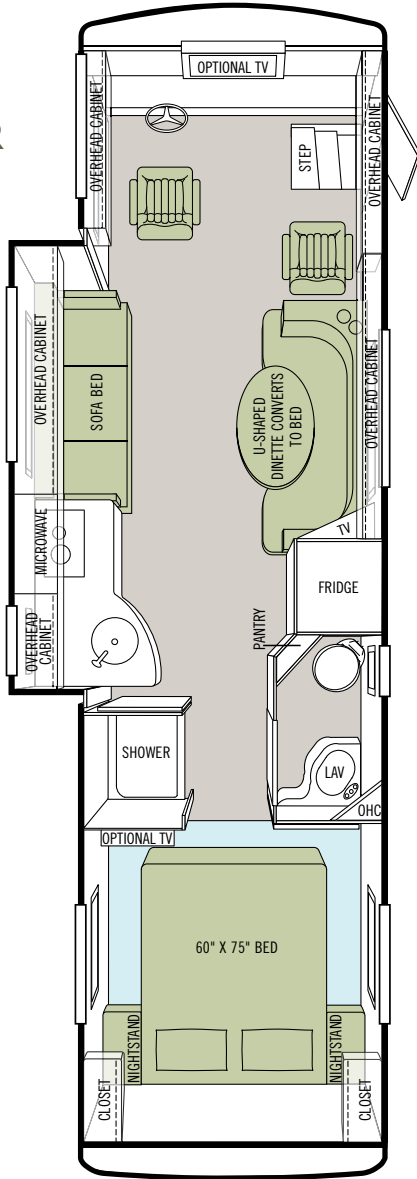
### AVAILABLE OPTIONS:

AVAILABLE OPTIONS:	28 BR	32 BR
Vacuum Cleaner System	<input type="radio"/>	<input type="radio"/>
Ivory Cream Solid Cabinet Doors & Drawer Fronts	<input type="radio"/>	<input type="radio"/>
English Chestnut Solid Cabinet Doors & Drawer Fronts	<input type="radio"/>	<input type="radio"/>
Medium Alderwood Solid Cabinet Doors & Drawer Fronts	<input type="radio"/>	<input type="radio"/>

FLOOR PLANS

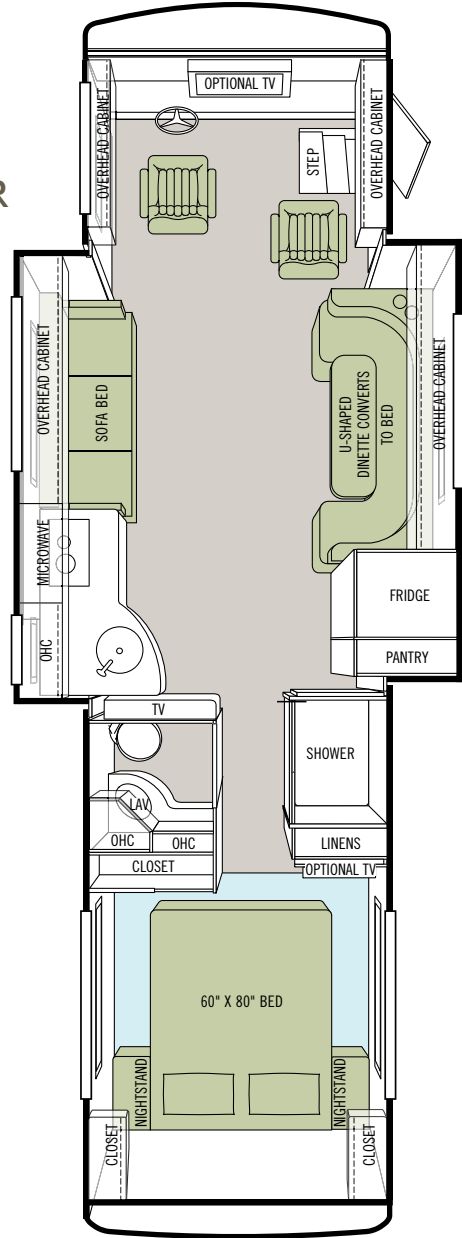
Coming Spring 2011

28 BR



OPTIONAL TILE FLOOR  
IN BEDROOM

32 BR



OPTIONAL TILE FLOOR  
IN BEDROOM

INTERIOR SPECIFICATIONS



English Chestnut



Medium Alderwood



Ivory Cream

Fossil

BEDROOM  
MAIN & ACCENT



LIVING AREA  
SOFA & ACCENT



DINETTE



CARPET



COUNTERTOP



Maui

BEDROOM  
MAIN & ACCENT



LIVING AREA  
SOFA & ACCENT



DINETTE



CARPET



COUNTERTOP



Summer

BEDROOM  
MAIN & ACCENT



LIVING AREA  
SOFA & ACCENT



DINETTE



CARPET



COUNTERTOP



AllLEGRO Breeze cabinet doors are made of solid wood. Cabinet finishes are available in combination with any fabric scheme. Options may not be available for every model. Specifications and standard or optional equipment subject to change without notice or obligation.

BEDROOM SUITE FABRIC



Fossil

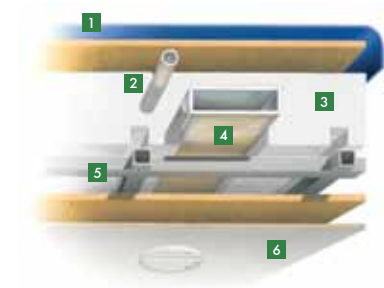


Maui



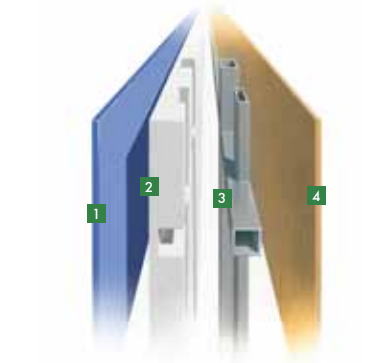
Summer

## CONSTRUCTION SPECIFICATIONS



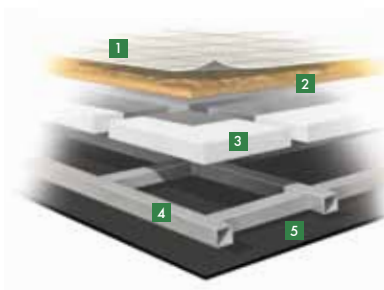
### Roof

1. One-piece, moisture resistant molded fiberglass roof cap provides insulation and strength and prevents water intrusion
2. A/C Condensation Drainage System that runs internally through the roof insulation and down the sidewalls, redirecting water underneath the motor home
3. 5½" formed insulation
4. Quiet Air Cooling System with return air and foil-wrapped cooling exhaust ducts
5. Durable, tubular aluminum roof skeleton
6. Easy-to-clean soft touch vinyl ceiling panel



### Sidewall

1. Gel-coat fiberglass outside wall panel
2. High-performance thermal insulation
3. Durable, yet lightweight, tubular aluminum wall skeleton
4. Decorative inside wall panel



### Floor

1. Vinyl tile floor bonded to high-impact oriented strand board
2. High-level engineered oriented strand board
3. High-performance thermal insulation
4. Durable, tubular floor skeleton
5. Woven moisture barrier material

**10-YEAR LIMITED UNITIZED CONSTRUCTION WARRANTY** The structural integrity of the entire coach is guaranteed for the next 10 years. Warranty includes wall separation and inner frame weakness.

**5-YEAR LIMITED LAMINATION WARRANTY** We guarantee against all exterior fiberglass delamination or wall separation.



# TIFFIN MOTORHOMES

WHEREVER YOU GO, WE GO.

105 2ND STREET NW RED BAY, AL 35582 CALL 256.356.8661 FAX 256.356.8219  
FOR PARTS AND SERVICE CALL 256.356.0261

Phaeton®, Allegro®, Allegro Breeze®, Allegro RED®, Allegro Bus®, Zephyr®, Roughing It Smoothly®, Open Road® and Pusher® are registered trademarks of Tiffin Motorhomes. For more specifics on what makes a Tiffin Motorhome, go to [tiffinmotorhomes.com](http://tiffinmotorhomes.com)